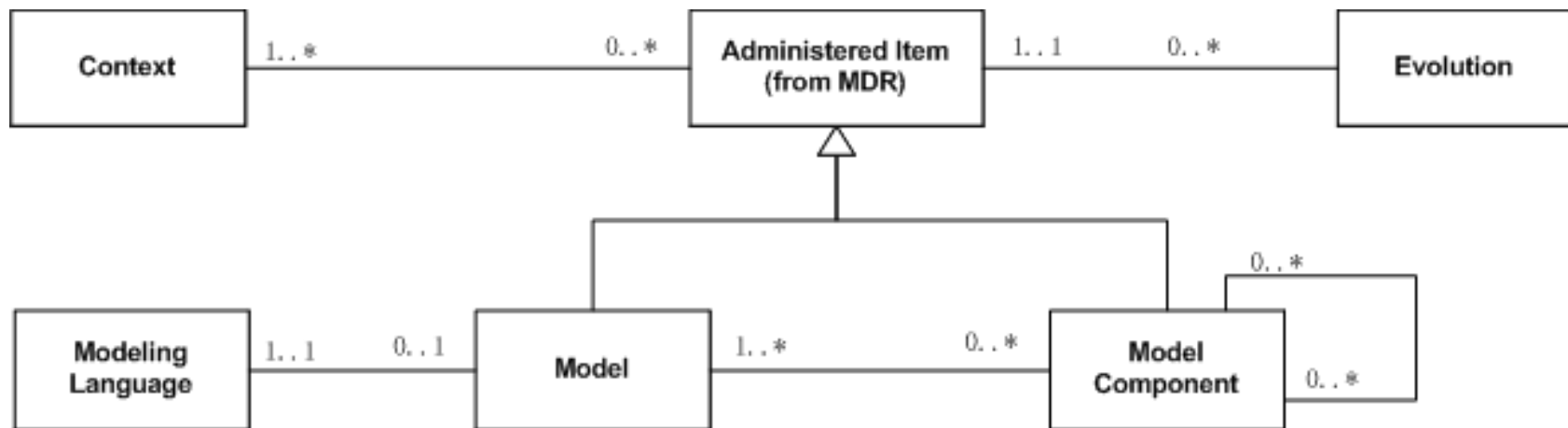


Registering process model based on MFI-2 & MFI-5

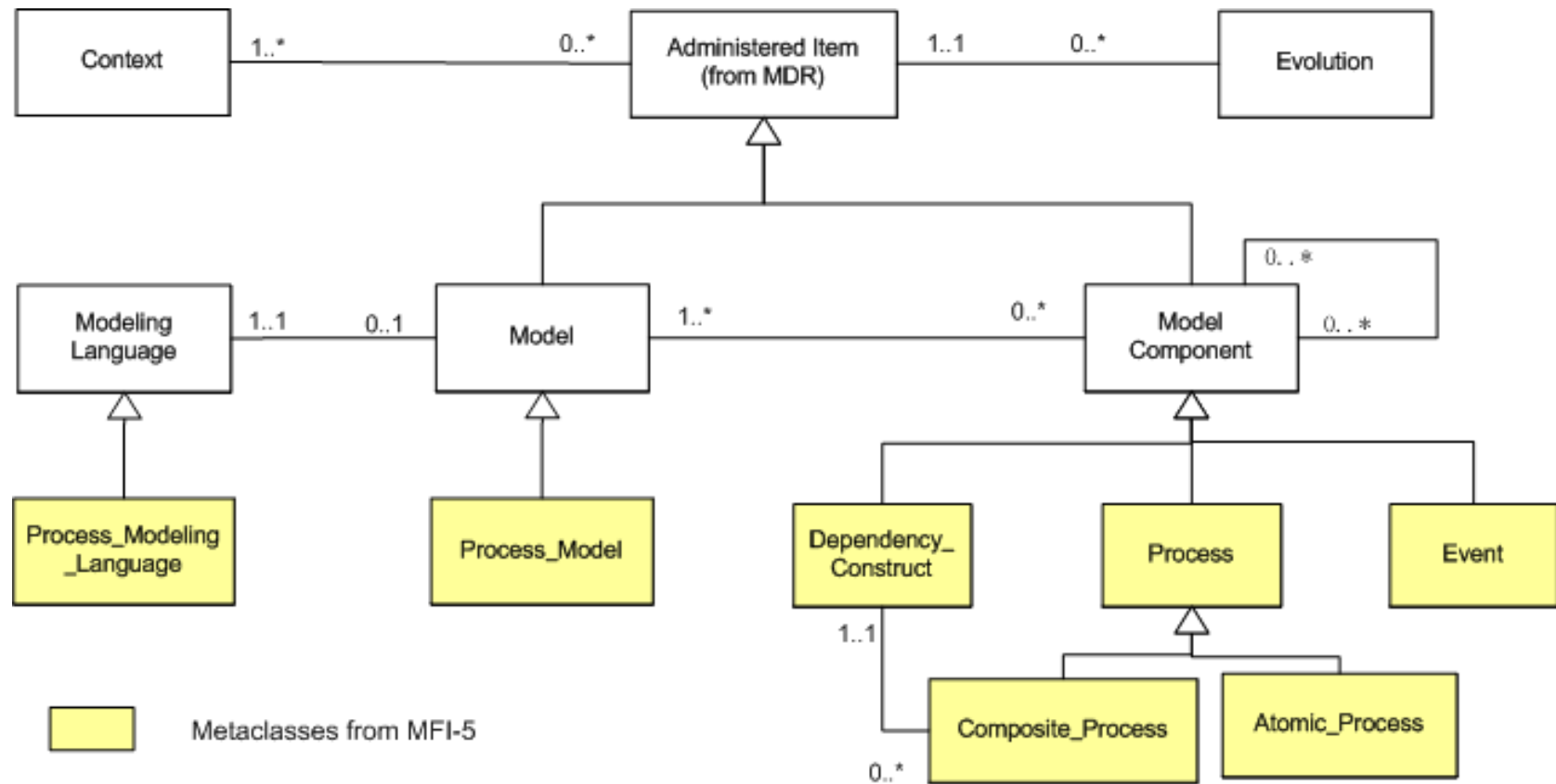
Chong Wang

2010-05-19

Proposed structure of MFI-2

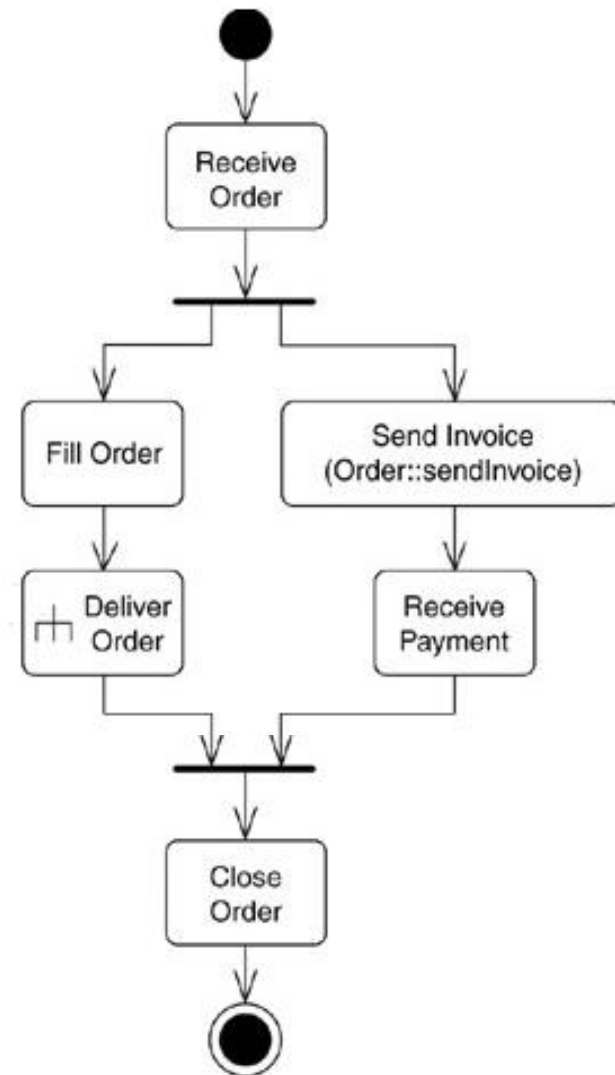


Relationship between MFI-5 and MFI-2



An Example

- Description: *HandleOrder* activity expressed in UML designates the processes of online order dealing with.



Registration info based on MFI-5

| Process00 | |
|-----------------------|--|
| ID | 0 |
| name | <i>HandleOrder</i> |
| administration_Record | # |
| type | C |
| describedBy | <i>Process_Model00: HandleOrder_ProcessModel</i> |
| restrictedBy | <i>Sequence00</i> |
| Process01 | |
| ID | 1 |
| name | <i>ReceiveOrder</i> |
| administration_Record | # |
| type | A |
| Process02 | |
| ID | 2 |
| name | <i>AND_Split00_Process</i> |
| administration_Record | # |
| type | C |
| restrictedBy | <i>AND_Split00</i> |
| Process03 | |
| ID | 3 |
| name | <i>AND_Join00_Process</i> |
| administration_Record | # |
| type | C |
| restrictedBy | <i>AND_Join00</i> |

| Process_Model00 | |
|------------------------|--------------------------------------|
| name | <i>HandleOrder_ProcessModel</i> |
| URI | <i>URI_HandleOrder_ProcessModel</i> |
| Describes | <i>Process00::HandleOrder</i> |
| modelType | <i>UML</i> |
| Sequence00 | |
| constructType | <i>Sequence</i> |
| nodeSet | <i>Process01: ReceiveOrder</i> |
| | <i>Process02:AND_Split00_Process</i> |
| | <i>Process03: AND_Join00_Process</i> |
| | <i>Process04:CloseOrder</i> |
| AND_Split00 | |
| constructType | <i>AND_Split</i> |
| nodeSet | <i>Process05: Sequence01_Process</i> |
| | <i>Process06:Sequence02_Process</i> |
| AND_Join00 | |
| constructType | <i>AND_Join</i> |
| nodeSet | <i>Process05: Sequence01_Process</i> |
| | <i>Process06:Sequence02_Process</i> |
| Process04 | |
| ID | 4 |
| name | <i>CloseOrder</i> |
| administration_Record | # |
| type | A |
| consumes | <i>Resource00:Order</i> |

Registration info based on MFI-2 and MFI-5

| Metaclasses in MFI-2 | Metaclasses in MFI-5 | Value |
|----------------------|---------------------------|------------------|
| Modeling Language | Process_Modeling_Language | UML |
| Context | | On-line shopping |
| Model | Process_Model | ProcessModel00 |
| ModelComponent | Process | Process00 |
| | | Process01 |
| | | Process02 |
| | | Process03 |
| | | Process04 |
| | Dependency_Construct | Sequence00 |
| | | AND_Split00 |
| | | AND_Join00 |